

C
B
A



CHOCTAWHATCHEE BASIN ALLIANCE **OWC**

THE ALLIANCE

The newsletter of the Choctawhatchee Basin Alliance

Volume 10.1, July 2006

The Choctawhatchee Basin Alliance is committed to sustaining and providing optimum utilization of the Choctawhatchee Basin watershed. Under the auspices of the Okaloosa-Walton College, the Choctawhatchee Basin Alliance provides opportunities for citizens, educators, and technical experts to promote the health of the Choctawhatchee Basin watershed.

Website:
www.basinalliance.org
Email:
cba@owc.edu
Phone:
850-729-6456

Advisory Board:

Al Wenstrand (*Chair*)
Dennis Peters (*Vice Chair*)
Taylor Kirschenfeld (*Secretary*)
Ross Hamilton (*Treasurer*)
Bill DeBusk
Mike Flynt
Richard Griswold
Jerry Najarian
Tom Patton
Dan Robeen
James Ward

Staff:

Joy Brown
Phillip Ellis
Sarah Kalinoski
Lauren Nowling

Inside this Issue:

Fort Walton Beach NPDES	p2
Walton County NPDES	p3
Volunteer News	p4
Prevent Stormwater Runoff	p6



Phillip—Project Coordinator

Happy 10th Birthday CBA



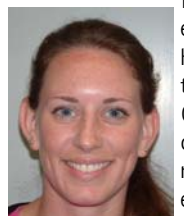
Joy—Project Specialist

The Choctawhatchee Basin Alliance celebrates 10 years of service! CBA was created in 1996 as a response to public concerns by the Ecosystem Restoration Section of the Florida Department of Environmental Protection and shortly thereafter adopted by Okaloosa-Walton Community College, which serves as our fiduciary agency. Many of our original Advisory Board Members are still active in the organization and have seen CBA mature into a thriving group with an exponential growth in staff and project scope. The organization was kicked off with our bible of sorts when *Breaking New Ground* was created with the technical assistance of many local citizens, regulatory agencies and technical advisors.

As CBA has grown we have stayed true to our mission statement as we strive to maintain and utilize our cherished water resources. CBA has conducted numerous projects under the auspices of our mission statement including: Nutrient Loading Studies of Hogtown and Boggy Bayous, A Choctawhatchee Bay Sediment Study, and Restoration Projects in the watershed, along the shores of the bay and the coastal dune lakes in South Walton County. Our most successful project to date is the Water Quality Monitoring Volunteer Program. The volunteers are responsible for monitoring the surface waters of the bay, river and coastal dune lakes each month. CBA is proud to maintain the largest ongoing water quality database of deep water stations in Choctawhatchee Bay/Watershed. The database now contains data from over 100 stations that are monitored each month for baseline parameters. As we continue to grow we have stayed the course with our education objectives making sure to always bring information to the public pertaining to the condition of our local waterways. Programs such as Bay Day, Volunteer Appreciation Meetings, and our Alliance Updates are aimed to educate and involve the public in what is happening our watershed.

As we grow we are expanding and changing in many ways. The CBA offices have recently moved to the Okaloosa-Walton College main campus in Niceville. We will be moving into the new science building when construction is completed in August 2006. We are also currently working on changing our website, www.basinalliance.org. We will be updating the website with our most recent projects and water quality data along with ways you can help reduce nutrient input via stormwater.

The CBA staff that you know and love welcomes two new members to our team. Lauren Nowling is our new Staff Assistant who joined CBA in March 2006. Due to our expanding volunteer efforts we have been very fortunate to have Sarah Kalinoski in the newly created position of Volunteer Coordinator since February 2006, but she has been with CBA since September 2005. Joy Brown and Phillip Ellis are concentrating their efforts on working with our NPDES partnerships. These partnerships allow CBA to expand our public education and involvement efforts to fulfill the permit requirements of our partners.



Lauren—Staff Assistant



Sarah—Volunteer Coordinator

FORT WALTON BEACH NPDES PROGRAM

(Joy Brown)



CBA has been very fortunate to partner with the City of Fort Walton Beach in an effort to give them maximum education compliance for the 3rd year of their National Pollution Discharge

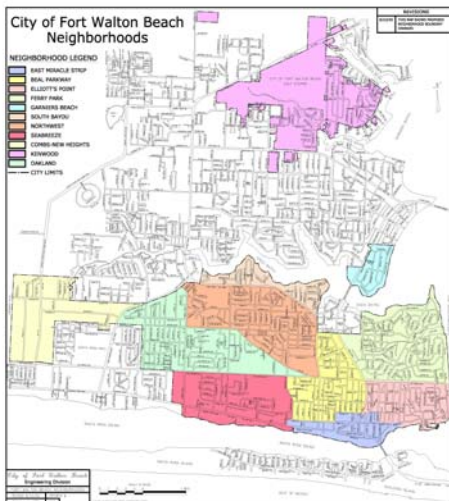
Elimination System (NPDES) permit. Under the partnership CBA has been disseminating stormwater and safe boating literature to the general public. CBA staff have also attended Neighborhood Program meetings to discuss Best Management Practices (BMPs) for reducing excess nutrient input by homeowners. BMPs include picking up pet waste, proper fertilizing practices, proper vehicle maintenance to reduce oils and gas from driveways and not disposing of any waste down the stormdrains.

The Neighborhood Program was established by the City to promote public input for city decisions. The meetings are scheduled monthly for the 11 different neighborhood sections. The meetings normally consist of a speaker for a short topic (Fire or Police department, CBA, etc.) followed by time for discussion. The discussion focuses on improvements the citizens would like to see in their neighborhood. For more information on the Neighborhoods Program contact Dan Bubis, Neighborhoods Program Coordinator, at (850) 833-9603.

The City of Fort Walton Beach has also installed stencils on some of the stormdrains in the city limits. The stencils are a reminder that everything we put on the ground runs into the waters of Choctawhatchee Bay, its Bayous, and Santa Rosa Sound. Disposing of yard waste, old paint or used oil down the stormdrain contributes to poor water quality.



CBA volunteers have been monitoring the surface waters of the Choctawhatchee Basin since 2000. As a result of our NPDES partnership with the City of Fort Walton Beach we have extended our monitoring efforts around the city. CBA is currently conducting volunteer monitoring on a monthly basis of our existing sites (50+ in Choctawhatchee Bay) and have added more stations in Santa Rosa Sound, Cinco Bayou, Lake Earl, and Bass Lake (headwaters of Don's Bayou).



WALTON COUNTY NPDES PROGRAM

(Phillip Ellis)



Since CBA's last newsletter, Phillip Ellis with The Choctawhatchee Basin Alliance and Scott Jackson with The Walton-Okaloosa County-University of Florida-IFAS Extension Service hosted a series of community discussions for the coastal dune lakes. These community meetings are the first steps initiating a process that will result in management plans for each of Walton County's rare coastal dune lakes. Similar ecosystems are found in Madagascar, New Zealand, Australia and USA Pacific Coast. Fifteen named Coastal Dune Lakes have been identified in Walton County.

The Board of County Commissioners (BCC) is working through the appointed Coastal Dune Lakes Advisory Board with broad representation of property owners, businesses and concerned residents. One of the main concerns of the Coastal Dune Lakes Advisory Board (CDLAB) is the future stability of these globally rare and economically valuable community assets. The goal of this effort is to create a management plan for each individual coastal dune lake through open participation by all property owners and stake-holders.

An initial public meeting sponsored by the CDLAB was held earlier this year on January 21 with approximately 60 community participants. During this session, facilitated discussions were held to identify the most important issues related to our coastal dune lakes. Meeting participants identified "Enforcement of Existing Regulations" and "Management of Outfall Issues" as being top concerns.

The next step was to host a series of individual community lake meetings. In these discussions we generated a prioritized project list and laid the ground work for the lake management plans. Ideas produced will be forwarded to a technical committee which will draft detailed language of the management proposal. The completed management proposal will be presented at a future community meeting for YOUR discussion, modification and endorsement. Finalized management plans will then be presented to the BCC for their action and direction. These lake management plans will aid our County in future protection and restoration efforts.

Through this process the long-term health and economic viability of the lakes will be ensured. Additionally, this process will develop and implement a prioritized list of projects to enhance the lakes and increase scientific knowledge and awareness of the lakes' ecosystems.

For more information, please visit the project website at <http://dunelakes.org>. The website offers a synopsis of the individual meetings and an opportunity to participate in our online discussion.



Stallworth Lake Outfall at Sunset

VOLUNTEER NEWS

(Sarah Kalinoski)

As part of CBA's recent alliance with the City of Fort Walton Beach on the NPDES program, we have added several new monitoring stations within the municipal boundaries. Four new stations will be monitored for basic parameters using our hydrolab equipment and will also be sampled for analysis of chlorophyll, nitrogen, and phosphorus levels through the Florida LAKEWATCH program (University of Florida). Three of these stations are near stormwater outlets along the Santa Rosa Sound, and one of them is near an outlet in Cinco Bayou. Six other stations in Cinco Bayou have been added as well. These stations are all stormwater outfalls and will be monitored monthly with a hydrolab for illicit discharge. (See page 2 for a complete sampling map.)

To accommodate our growing sampling program, I'm happy to announce the addition of a volunteer monitoring team on the Sound and a new solo volunteer on Cinco Bayou. I'd also like to extend a special thanks to our Fort Walton Beach team for working with us to modify their sampling route in accordance with our NPDES requirements.

Since the publication of our last newsletter, I've also had the pleasure of training an addition to the Niceville team and three new volunteers on the coastal dune lakes in South Walton County. Please join me in welcoming all of our new recruits!

Cinco Bayou &
Basin Bayou:
Alec MacBeth

Santa Rosa
Sound Team:
Bill Lang
Gene Andre
Nelson Van Horn
Rob Cochran

Oyster & Allen
Lakes:
Tom Roache

Coastal Dune
Lakes:
Jack Eaves

Niceville:
Carol Moreau

Little Redfish
Lake:
Bill Crane

Continuing Volunteers:

Neil Arnott	Chandra & Jordan Hartman	Bill & Sandi Rock
Murray Balkcom	Jennifer Jones	David Rovner
Steve & Adrian Burnette	Katherine Kenard	George & Judi Russell
Jerry Coker	Carl Kirst	Brad & Susan Smith
William Coker	Bill Lewis	Andy Smyth
George & Kitty Cottingham	Larry Livingston	Jim Smyth
Andy & Laurie Dula	Jim Orsak	Richard Stafford
Marisa Eley	Paul Otto	Tom & Robin Stiles
Emily Ellis	Dick Pollock	Bill Wade
Bill Fletcher	Jim Radtke	Rock Wester
Chris Foreman	Kathleen Reed	Janet Wilson
Caroling Geary	Hal Rhodes	
Joe Guss	Jim Roberson	

Choctawhatchee Basin Alliance

"Striving to Protect and Enhance the Resources of the Choctawhatchee River Basin"

Membership Registration and Renewal Form:

Membership Dues:

- Individual or Family (\$25 to \$250)
- Lifetime (\$250)
- Bronze Alligator Sponsor (\$250)
- Silver Osprey Sponsor (\$500)
- Golden Dolphin Sponsor (\$1,000)
- Platinum Sturgeon Sponsor (\$2,500)



Please make checks payable to:
Choctawhatchee Basin Alliance of OWC

Please send payment to:
 CBA
 Attn: Membership Dues
 100 College Blvd
 Niceville, FL 32578

Total Enclosed: _____

Name: _____ e-mail address: _____

Address: _____

Home Phone: _____ Work Phone: _____

Thank you to our new and renewed members !!!

Jack & Karen Baker
 Jim & Gail Breitenfeld
 Sarah Carpenter
 Town of Cinco Bayou
 Jerry T. Coker
 George & Kitty Cottingham
 Ruth Crenshaw
 Marianne Croze-Perry
 Ed Dunbar
 Robert L. & Katherine Grete
 Chandra and Jordan Hartman
 Gloria Hovorka
 Jeff Littrell
 Jim & Dottie Liufau
 Charles Love
 Alec MacBeth
 Josef March

Charles Meister
 Jerry Najarian
 Darby O'Brien
 Tom Patton
 William Pizzolato
 William Puryear
 Harold "Ric" Shepherd
 Tom & Nancy Shortridge
 Richard Stafford
 Cynthia & Jeffrey Ward Turner
 John M. Vaughan
 April Vinson
 Kay & Billy Walker
 Donald Ware
 George Warren, Jr.
 Al Weidenbusch

C
B
A



CHOCTAWHATCHEE
BASIN ALLIANCE **OWC**

Choctawhatchee Basin Alliance
Okaloosa-Walton College
100 East College Boulevard
Niceville, FL 32578
An Equal Access/Equal Opportunity Institution

Return Service Requested

www.basinalliance.org

To:

What You Can do to Prevent Stormwater Runoff Pollution...

Adopt these healthy household habits and help protect lakes, streams, rivers, wetlands, and coastal waters. Remember to share the habits with your neighbors!!

- Use fertilizers sparingly and sweep up driveways, sidewalks, and roads.
- NEVER dump anything down storm drains.
- Vegetate bare spots in your yard.
- Compost your yard waste.
- Utilize Integrated Pest Management (IPM).
- Direct downspouts away from paved surfaces, utilize rain barrels & rain gardens.
- Take your car to the carwash or wash it in the grass instead of washing it in the driveway.
- Check car for leaks and recycle motor oil.
- Pick up after your pet.
- Recycle.
- Select native plants and grasses that are drought- and pest- resistant. Native plants require less water, fertilizer, and pesticides.
- Don't overwater your lawn. Water during cool times of the day, and don't let water run off into the storm drain.
- Purchase and use nontoxic, biodegradable, recycled, and recyclable products whenever possible.