



# The Alliance

Quarterly Newsletter of the Choctawhatchee Basin Alliance

Volume 4.4

Jan - March 2001

## -FROM THE ADMINISTRATIVE OFFICER

The CBA would like to thank all of you for the tremendous support we have received from individuals, businesses and organizations. Our membership base and volunteer support has grown tremendously! There is a momentum that is building for the preservation of our resources. We appreciate the many in-kind services and donations that we have received in support of CBA programs. We are truly lucky to be working in such a giving community!

## MISSION STATEMENT

"The Choctawhatchee Basin Alliance is an organization committed to sustaining and providing optimum utilization of Choctawhatchee Bay. The Choctawhatchee Basin Alliance, under the auspices of the Okaloosa-Walton Community College, provides opportunities for citizens, educators, and technical experts to promote the health of the Choctawhatchee Basin".

## UPCOMING EVENTS

**Feb. 7 & March 7** - CBA Board of Directors meeting, 4pm-6pm, Mattie Kelly Estate, 4141 Indian Trail Road, Destin

**February 21** - "Set up a CBA Chapter at your School" orientation at Niceville High School, 3pm, Room 504

**February 24** - Shoreline Restoration at Okaloosa Island, 8 am, Gulf Islands National Seashore Park

**March 28** - Shoreline Restoration Workshop, 6:30 - 8:30pm, Destin Community Center

"State of the Bay", a CBA Quarterly Program, will give an overview of the characteristics of the Choctawhatchee River basin system, discuss how the watershed is changing and what an individual can do. Informative handout and CBA opportunities will be discussed.

*Speaker: Ross Hamilton, OWCC Science Dept. Chair*

*Date: March 15*

*Time: 6:00 pm*

*Location: Fort Walton Beach Civic Center  
107 SW Miracle Strip Parkway*

## IN WITH THE NEW AND OUT WITH THE "GOLD"

### -FROM THE CBA CHAIRMAN

CBA began its year 2001 by bidding farewell to some treasured resources who have served on the Board of Directors for quite some time. The CBA Board will certainly miss Carolyn Salmon, Marcia Almond, and Marland Thurston. We trust that they will continue to support the CBA environmental efforts in other capacities.

The CBA December 2000 Board elections retained three incumbent members; Ross Hamilton, Sharon Maxwell, and Jane Roberts....we weren't going to let them get away! Newly elected arrivals to the CBA Board include Michael Reid, Claude Tankersley, and Lonnie Hearn. Each bring outstanding qualifications and capabilities, eager to support the mission and vision of the CBA. Michael is a civil and environmental engineer with Reid Engineering, Inc. who provides cost estimating services with expertise in natural resources damage assessment.

Claude Tankersley also has a civil engineering background and is currently employed by Jones, Edmunds, & Associates, Inc. Claude specializes in water and wastewater treatment, as well as storm water planning, and promises to provide grant proposal guidance to our CBA funding efforts. Mr. Hearn is also proficient at grant and proposal writing. What caught our eye was Lonnie's adeptness at working in "multi-agency working groups with complex political and financial relations". Did he say CBA?

Welcome aboard gentlemen and prepare yourselves for quite a year! Remember, you don't have to be a CBA Board member to participate with CBA functions, activities, and programs...just check out the highlights of *The Alliance* or our website (<http://BasinAlliance.org>) for opportunities to get involved! See You On the Bay! - Dennis Peters

## CHOCTAWHATCHEE BASIN ALLIANCE

Board Officers  
Dennis Peters, Chair  
(850) 609-3414

Vice Chair  
vacant

Secretary  
vacant

Ross Hamilton, Treasurer  
(850) 729-5239

Board Directors  
Richard Griswold, P.E.  
(850) 837-2843

Jane Roberts  
(850) 863-2727

Mike Flynt  
(850) 729-5402

Claude Tankersley, P.E.  
(850) 837-7860

Sharon Maxwell  
(850) 897-5228

Lonnie Hearne  
(850) 865-9302

Michael Reid, P.E.  
(850) 897-4612

Shawnae Tallman  
(850) 897-5496

Taylor Kirschenfeld  
(850) 939-8300

Dan Robeen  
Ex officio (Eglin AFB)  
(850) 882-6282

Staff  
Erica Mitchell, Administrative Officer  
(850) 650-9330  
mitchelle@owcc.net

*Choctawhatchee Basin Alliance  
Okaloosa Walton Community College  
100 East College Boulevard  
Niceville, FL 32578*

# VOLUNTEER SPOTLIGHT

## Water Quality Monitoring

Hats go off to a core group of volunteers who were instrumental in constructing our CBA Monitoring Program and taking it out on the bay!

Mike Nunley - Fort Walton Beach team leader and station coordinator  
David Wolfenden - Niceville team leader  
Robert Poe - Hydrolab "guru"  
John Hutson - The Gadget Man and Boat Captain  
Jack Arthur - Fort Walton Beach team sampler  
George Russell - Freeport team leader

Additionally, we trained 35 volunteers in Florida Project Coast and Hydrolab sampling procedures to expand our water quality monitoring efforts across the Bay.

## Marsh Grass Restoration

We owe these volunteers a hot cup of cocoa after showing up at 8 am in very cold temperatures to plant marsh grasses along the Choctawhatchee Bay shoreline on Okaloosa Island! A fun time was had by all . . .

Tyler Porter	George and Judy Russell
Anne MacCarroll	Patrick Sandoval
Mel Tennis	Jody Henderson
Karen Daniels	Rick Stevens
Jon Goyert	Wayne Cramer
Jamie McKee	Cliff Hannah
Jim and Dawn Fitzpatric	Frank Brutt
Terri Anderson	Crestview Assembly of God
Amber Wesolowski	Jack Arthur
Barbara Kopec	
Mary and Bill Fletcher	
Jim and Pauline Waters	
Jim Finn	
Robin and Tom Stiles	
Rhonda Yates	
David Smith	
Cleve Edgemond	

Jennifer Mathers, Volunteer Coordinator for Jackson Guard, did a wonderful job in getting the word out and organizing these folks for our Okaloosa Island Marsh Restoration Project!

*We are sending out periodic notices on upcoming events and activities to CBA members by e-mail. If you have not received any e-mail notifications and would like to - please send a note to mitchelle@owcc.net.*

## CBA Volunteers Sample the Bay and Bayous

December and January were historical months in the CBA, as the first water quality samples on the bay were taken as part of the CBA Deep Water Monitoring Program. By "Deep Water" we mean that samples are being collected offshore by boat in the middle of bayous and the bay itself. Mike Nunley's team collected samples from ten stations around the Fort Walton Beach area, while David Wolfenden and his team braved freezing temperatures to collect water samples around the Niceville area. The samples will be analyzed by the Florida Project Coast laboratory in Gainesville for nutrient concentration and chlorophyll. The CBA has just received a piece of automated water sampling equipment, a Hydrolab, that will be used to determine pH, salinity,

temperature, turbidity and dissolved oxygen at the surface and bottom of the water column at the station locations.

George Russel of Freeport is organizing a team that will begin sampling locations around Freeport in February. With our recently trained volunteers, we are looking forward to organizing teams for the Destin and Santa Rosa Beach Area, as well.

When all teams are in place collecting monthly samples, the CBA will be monitoring 50 stations across the bay for water quality parameters on a monthly basis! That is incredible! And it is all due to the dedication and interest of our volunteers.

## CBA Becomes a Contributor to National Database

With a projected 50 stations to be sampled across the bay on a monthly basis, you might wonder what CBA will be doing with all of that data. We have been designated as a contributor to the EPA National Database for water quality information, STORET. STORET (short for STORage and RETrieval) is a repository for water quality, biological, and physical data and is used by state environmental agencies, EPA and other federal agencies, universities, private citizens, and many others. Okaloosa Walton Community College will be the first community college in Florida with an identification number in STORET. With STORET, Choctawhatchee Bay water quality data can be accessed by anyone across the country. Please visit the EPA site <http://www.epa.gov/storet/> to learn more about STORET. Also visit the FDEP site <http://www.dep.state.fl.us/nwd/ecosys/waterquality/Outlook.htm> to learn about other local water quality information in our area such as the Okaloosa County Aqualab Program and red tide information. In time, we will be posting trend analysis and interpretive information on the new CBA website, [www.basinalliance.org](http://www.basinalliance.org).



## Bluewater Bay Marina

We thank Brett Hinely of the Bluewater Bay Marina for donating dry storage space for the CBA Boat, the *RV Scout!* Brett is keeping the 17' Cape Horn in good shape for us and is putting it into the water when we are ready to take water quality samples. It is a perfect location for our Niceville Water Quality Monitoring Team to access the waters around the Niceville area. The Bluewater Bay Marina is located at 290 Yacht Club Drive in Bluewater Bay. Please visit their website at [www.bluewaterbaymarina.com](http://www.bluewaterbaymarina.com)!

## Thanks to all Boat Captains

We are very appreciative of those volunteers who are offering the services of their boats for the water quality monitoring effort!

## Stormwater Committee Progress

by Richard Griswold

One of the elements contributing to deterioration of Bay waters is nutrients. The primary mode of transport by which these nutrients enter the bay is stormwater runoff. CBA formed a committee to address this problem. At the time of formation of the committee, little work was being performed by any political jurisdiction in this realm. The committee decided that a master plan could be developed for the entire basin purely from volunteer effort. The effort was predicted to take over three years to develop and work was begun with the first committee meeting in February of 2000. Work completed to date include determination of available data bases, and determination of data bases needed to build a stormwater GIS which would be the backbone of the stormwater master plan.

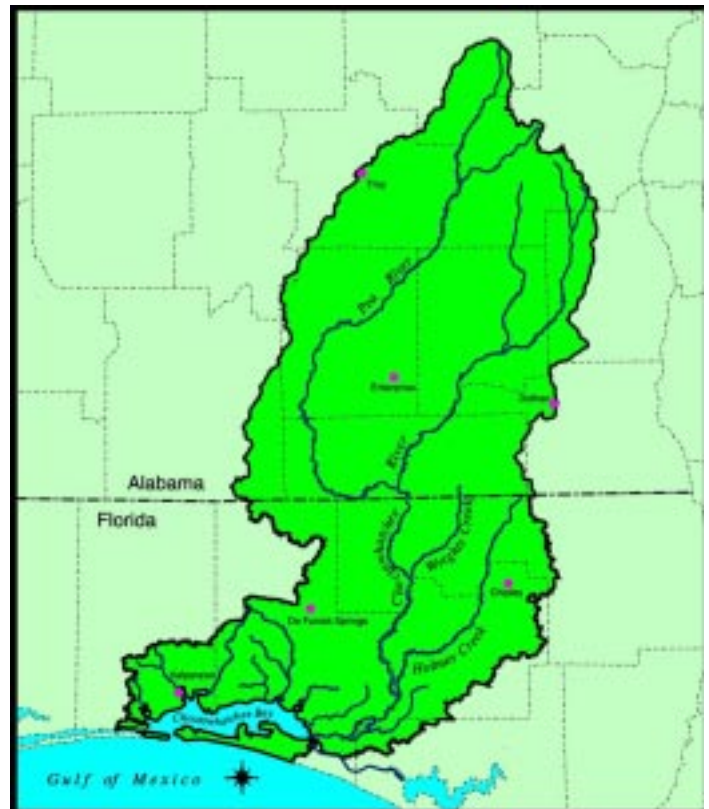
The committee met numerous times and one of the most rewarding aspects of the committee was working with representatives of the staff of various political jurisdictions. These representatives showed an unwavering

commitment to building a project that was consistent across all jurisdictions. During the past year, Okaloosa County, Walton County, and Destin have all begun their own master plans. Other jurisdictions such as Fort Walton Beach and Niceville are working hard to address stormwater problems. Eglin AFB has been cooperative and is farther ahead with their stormwater work than other jurisdictions.

At this time, the CBA committee will be relegated to a role of helper instead of builder. The committee will help fill in gaps in the various master plans under development and will continue to meet with representatives of the local governments. These meetings will be a forum for reporting progress and will help in the development of a consistent product. If the product is consistent then a true regional stormwater master plan will be available for use yet no single jurisdiction will have the burden of an expanded effort to create that plan.

## Crossing the State Line

Watersheds and ecosystems do not recognize the political boundaries which have been assigned to the terrain. The Choctawhatchee Watershed Basin expands across both the states of Florida and Alabama to encompass over 5,000 square miles and six counties in Florida and nine counties in Alabama. The mission of the CBA is to promote conservation of all of our resources throughout the Choctawhatchee Basin. We are concerned with the activities, pollution and sedimentation into streams and tributaries of the upper watershed, which ultimately drain into Choctawhatchee Bay and the Gulf of Mexico. The CBA has primarily focused on awareness, education and conservation efforts around Choctawhatchee Bay. But this month, the CBA will be "crossing the state line" as we travel to New Brockton, Alabama for a meeting to develop a Choctawhatchee Clean Water Partnership and to visit the Choctawhatchee, Pea and Yellow Rivers Watershed Management Authority Board. We would like to see a Watershed Restoration Action Strategy for the basin as a whole come out of this effort. Mike Mullen of Troy State University has taken a lead role in coordinating efforts across that line on the map.



## Okaloosa Island Shoreline Restoration Project

The U.S. Fish and Wildlife Service grant allowed volunteers to begin planting marsh vegetation along the seawall on Okaloosa Island in January. The first field day of the restoration project moved along quickly with 31 volunteers planting around 2,000 emergent marsh plants. On the first day, *Juncus roemerianus*, or black-tipped needle rush, was planted along the intertidal zone of Choctawhatchee Bay. Post hole diggers and shovels were used to dig a hole for the plants approximately one foot below the sandy soil surface. The planting site overlapped a row of successful black-tipped needle rush which was planted by Nadine Craft of the Northwest Florida Aquatic Preserves previously.

The second planting day in February saw vigorous support from around 30 volunteers, who expanded the restoration project with four other species of native marsh vegetation along the shoreline, totaling an additional 1,800 plants. These plant species were *Spartina patens*, *Sporobolus virginicus*, *Schizachyrium maritimum*, *Distichlis spicata* and *Paspalum vaginatum*.

The volunteers represented the Choctawhatchee Basin Alliance, the Choctawhatchee Audubon Society, Science Applications International Corporation, the Fort Walton Beach Rotary Club, the Interact Club of Choctawhatchee High School, Niceville High School, Crestview Assembly of God and the Emerald Coast Paddlers. One more planting date on February 24 will complete the marsh grass installation on Okaloosa Island. Interested volunteers are encouraged to contact the Volunteer Coordinator at Eglin AFB, Jennifer Mathers, at 882-4164, x 365.

Shoreline restoration refers to the planting and care of emergent vegetation along the shoreline to promote the area of salt marshes within an estuary. Salt marshes around Choctawhatchee Bay offer many values, functions, and benefits to our society. Marsh vegetation provides food, shelter, habitat, and spawning/nursery areas for most of our commercially and recreationally important seafood species. Another important function of marsh vegetation is protecting shorelines from erosion caused by wind, waves, currents, sea level rise, development, and mismanagement.



### *Did you know . . .*

While our volunteers are busy planting the cordgrass *Spartina* to restore coastal marsh habitat, other volunteers in Washington state's *Spartina* Watch are busily uprooting *Spartina* from nearshore areas of Puget Sound? *Spartina* species are not native to the predominant coastal mud flats found in Puget Sound which are typically devoid of vegetation. The ecosystem in Puget Sound is dependent upon mudflats for fertile feeding grounds. Introduction of the exotic *Spartina* species to Puget Sound marshes causes rapid spread of the cordgrass, which converts mudflats into high vegetated meadows.

## Coastal Dune Lakes Task Force to Make Recommendations for Study

The Choctawhatchee Basin Alliance has had the privilege of being part of a task force organized by Walton county for preserving and protecting the rare coastal dune lakes in South Walton County. The task force is made up of Walton county commissioners, the Tourist Development Council, the U.S. Fish and Wildlife Service, Florida Game and Fish Commission, U.S. Army Corps of Engineers, Walton County Extension Office, Florida DEP and St. Joe/Arvida Corporation, environmental organizations and private citizens. The Task Force has been considering performing lake monitoring through Florida LAKEWATCH, educational objectives and discussing regulatory authority regarding environmental protection on the coastal dune lakes. The Task Force is currently working on a proposal to be presented to the Walton County Board of Commissioners for approval. The proposal will detail a plan for a long-term water quality monitoring program throughout all the dune lakes, the collection of infrastructure data on the surrounding area and an educational outreach program. The key players in executing the study would be the Choctawhatchee Basin Alliance, Florida LAKEWATCH and the Walton County Extension Service with help from other community based organizations. The next Task Force meeting, which is open to the public, will be held at the Walton County Tourist Development Council Conference Room, at the corner of Hwy 98 and State Road 331, Feb. 23, 10 am - 12 pm.



### *Coastal Dune Lakes Include:*

Big Redfish Lake	Allen Lake
Deer Lake	Oyster Lake
Eastern Lake	Draper Lake
Box Lake	Little Redfish Lake
Western Lake	Camp Creek
Alligator Lake	Stallworth Lake
Stewart Lake	
Horseshoe Lake	
Fuller Lake	
Morris Lake	
Campbell Lake	
Lake Powell (Bay County)	

The coastal dune lakes in South Walton are separated from the Gulf of Mexico by a barrier beach and dune system which may be intermittent with or without a meandering tidal outlet. Some of the coastal dune lakes have dune systems about 500 feet wide and ridges extending 10-30 feet high. The intermittent connection to the Gulf is what distinguishes these lakes as rare. There are eighteen such lakes along the beaches of South Walton, and the Florida Natural Areas Inventory designates five Walton county coastal dune lakes as "imperiled globally because of extreme rarity". The dune lakes are important breeding areas for insects, and many birds and mammals utilize coastal dune lakes for food and habitat. The rapid rise of development in the South Walton area, including around the coastal dune lakes, raises the concern that nutrient runoff and sedimentation may impact the fragile ecosystems of the lakes.

## **CBA Receives \$20,000 for Shoreline Restoration and Education in Destin Harbor**

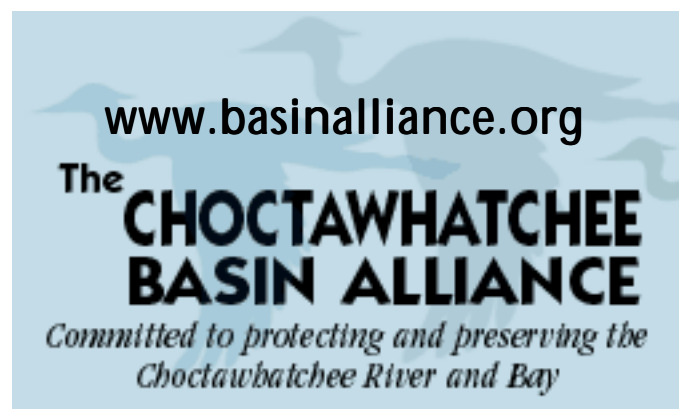
The Shell Marine Habitat Program recently committed \$20,000 to the Choctawhatchee Basin Alliance to expand the organization's Okaloosa Island Shoreline Restoration Project to Destin Harbor. The U.S. Fish and Wildlife Service previously awarded \$15,000 to increase marsh habitat on Okaloosa Island and provide public education. The community-based marsh grass restoration project at both sites will total \$60,000 in grant monies and in-kind services. The goal of the overall project is to improve water quality and fisheries habitat for Choctawhatchee Bay and the Gulf of Mexico by increasing salt marsh habitat and promoting conservation through education.

The Shell Oil Foundation has committed \$5 million to a competitive challenge grant program to fund important conservation projects for enhancing fish, wildlife and habitat in the Gulf of Mexico and associated estuaries. The Choctawhatchee Basin Alliance, of Okaloosa-Walton Community College was a recipient of this year's competitive grant cycle. The restoration and education initiatives on Okaloosa Island and in Destin Harbor support the Shell Oil Company goal of enhancing the marine habitat of the Gulf of Mexico through the development of partnerships to address the root causes of environmental problems. Funding will be used to educate and demonstrate that installing marsh vegetation along the shoreline is an economical and environmentally friendly alternative to seawalls, bulkheads, or riprap. The grants received will fund field trips, various educational activities and a workshop on shoreline restoration. The workshop will be held on March 28th from 6:30 pm to 8:30 pm at the Destin Community Center and will be free to the public. Rick Harter from the FDEP will give a presentation for private land-owners on the steps they can take for revegetating the shoreline with native marsh plants. Native plant nurseries and clubs will also be present with information and displays.

The CBA is currently looking for a privately owned area in Destin Harbor to conduct marsh grass restoration as a demonstration project for shoreline stabilization and habitat enhancement. All supplies and materials will be paid from the Shell Marine Habitat Grant. Interested property owners should contact Mark Christy at 837-2822 or Erica Mitchell in the CBA office at 650-9330 for details.

### **Science Applications International Corporation - CBA Website Sponsor!**

The Gulf Coast Office of SAIC is redesigning the CBA website and hosting the site on their server. They will also be maintaining the website, and will be updating it with information that the CBA office supplies them with. We greatly appreciate this sponsorship, and encourage you to see their great work at [www.basinalliance.org](http://www.basinalliance.org)!



## Thanks to our Recent New and Renewed Members!

Jones, Edmunds & Associates	Silver Corporate Sponsor	Mr. Chip Kirschenfeld	Individual/Family
Mr. & Mrs. Don Hefner	Silver Osprey Sponsor	Ms. Carolyn Kolb	Individual/Family
Mr. Crawford Sandefur	Silver Osprey Sponsor	Mr. & Mrs. Jerome Lanning	Individual/Family
Mr. Jim Vest (Mid-Bay Bridge Authority)	Silver Osprey Sponsor	Marilyn Lantz	Individual/Family
Ms. Linda Daugherty	Bronze Alligator Sponsor	Mr. Jeff Littrell	Individual/Family
Mr. Wayne Dugas	Bronze Alligator Sponsor	Mr. Woodrow Long	Individual/Family
South Walton Community Council	Organizational	Mr. Charles Love	Individual/Family
Walton County Board of Commissioners	Lifetime Organizational	Ms. Diane Mabrey	Individual/Family
Mr. Ross Hamilton	Lifetime	Ms. Debbie Marrs	Individual/Family
Mr. Peter DeBogory	Lifetime	Ms. Sue Martin	Individual/Family
Mr. Guy Donaldson	Lifetime	Dr. Eleanor McCain	Individual/Family
Mr. Allyn Donaldson, Jr.	Lifetime	Mr. Jamie McKee	Individual/Family
Mr. Alan Ficarra	Lifetime	Mr. Robert McKeeman	Individual/Family
Mr. Mike Flynt	Lifetime	Ms. Cindy Meadows	Individual/Family
Karen Daniels & Jon Goyert	Lifetime	Mr. Steve Milum	Individual/Family
Mr. Lonnie Hearne	Lifetime	Mr. Michael Mullen	Individual/Family
Col. Emile C. Iverstine	Lifetime	Nancy Murphy	Individual/Family
Ms. Irene Hanas Reser	Lifetime	Nancy Murphy	Individual/Family
Dr. A. Barnard Russell	Lifetime	Brice & Dotty Nist	Individual/Family
Drs. La Marche and Stainback	Lifetime	Ms. Beverly Ottzen	Individual/Family
Mr. David L. Yates	Lifetime	Mr. Gary Parsons	Individual/Family
Ms. Juanita Allen	Individual/Family	David & Karen Peterson	Individual/Family
Mr. W.E. Bair	Individual/Family	Mr. Roy Petrey	Individual/Family
Ms. Pat Baker	Individual/Family	Mr. Brad Pickel	Individual/Family
Ms. Gail Baker	Individual/Family	Mr. William Pizzolato	Individual/Family
Mr. Jack/Karen Baker	Individual/Family	Mr. Robert Poe	Individual/Family
Mr. Eric A. Beshore	Individual/Family	Mr. Don Pritt	Individual/Family
Ms. Joyce Bishop	Individual/Family	Mr. Thomas Reynolds	Individual/Family
Mr. Jon Blanchard	Individual/Family	Ms. April Newlin Rieveschle	Individual/Family
Ms. Jean Blumer	Individual/Family	Ms. Jane Roberts	Individual/Family
Ms. Betty Borthwick	Individual/Family	Mr. & Mrs. Don Roswell	Individual/Family
Ms. Annette Brabham	Individual/Family	Karen & Terry Schansman	Individual/Family
Chris Brown	Individual/Family	Mr. Ric Shepherd	Individual/Family
Jon & Sylvia Bryan	Individual/Family	Mr. & Mrs. Edward Sherling	Individual/Family
Jurate Burns	Individual/Family	Tom and Nancy Shortridge	Individual/Family
Mr. Bill Campbell	Individual/Family	Ms. Danielle Slaterpryce	Individual/Family
Ms. Polly or Mary Capps	Individual/Family	Ms. Amy Smith	Individual/Family
Reid and Mary Carder	Individual/Family	Mr. M.F. Spigelmire	Individual/Family
Mr. & Mrs. Jerry Carroll	Individual/Family	Ms. Nancy St. John	Individual/Family
Mr. Larry Casey	Individual/Family	Ms. Lyn Stafford	Individual/Family
Mr. Tom Church	Individual/Family	Tom and Robin Stiles	Individual/Family
Ms. Valerie Conroy	Individual/Family	Mr. Delmar Stone	Individual/Family
Mr. Harry N. Cook	Individual/Family	Mr. Mel H. Tennis	Individual/Family
Ms. Marianne Croze	Individual/Family	Mr. Paul Thorpe	Individual/Family
Ms. Evelyn Cunningham	Individual/Family	Mr. John M. Vaughn	Individual/Family
Mr. Connie W. Curtis	Individual/Family	Ms. Geraldine Via	Individual/Family
Mr. Andy S. Dula	Individual/Family	Ms. Joan Vienot	Individual/Family
Mr. Kenneth Frazier	Individual/Family	Mr. Donald Ware	Individual/Family
Ms. Robyn Gaston	Individual/Family	Nancie & Michael Warner	Individual/Family
Mr. Max & Fran Gerstman	Individual/Family	Mr. George A. Warner	Individual/Family
Mr. & Mrs. Ron Goodfellow	Individual/Family	Jim & Pauline Waters	Individual/Family
Ben & Pat Grafton	Individual/Family	Mr. & Mrs. M. Yonge Watson	Individual/Family
Ms. Mary Greene	Individual/Family	Mr. William Webster	Individual/Family
Mr. Charlene Greenwald	Individual/Family	Mr. David Wolfenden	Individual/Family
Dr. Robert L. Grete	Individual/Family	Ms. Jacque Woodall	Individual/Family
Mr. Raymond Guth	Individual/Family	Mr. John Haliday	Individual/Family
Mr. Raymond Guth	Individual/Family	Mr. & Mrs. Jack Kent	Individual/Family
Ms. Carol Haass	Individual/Family	Ms. Nonie Maines	Individual/Family
Mr. & Mrs. Bill Higgins	Individual/Family	Mr. Bruce Naylor	Individual/Family
Mr. John Hutson	Individual/Family	Mr. Michael Reid	Individual/Family
Nancy James	Individual/Family	Mr. Scott Brannon	Student
Mr. David Keener	Individual/Family	Whitney Kurz	Student
Ms. Patricia Kellogg	Individual/Family	Ms. Anita Kurz	Student
Ms. Cheryl Kennedy	Individual/Family		

## *The Choctawhatchee Basin Alliance*

*"Striving to Protect and Enhance the Resources of the Choctawhatchee River Basin"*

*I am so excited, I want to join now!*

Name \_\_\_\_\_

Address \_\_\_\_\_

\_\_\_\_\_

Telephone (Home) \_\_\_\_\_

Telephone (Work) \_\_\_\_\_

e-mail address \_\_\_\_\_

- Individual or Family ***\$25 annual***
- Senior Citizen ***\$15 annual***
- Full-time Student ***\$5 annual***
- Lifetime ***\$250***
- Bronze Alligator Sponsor ***\$250 annual***
- Silver Osprey Sponsor ***\$500 annual***
- Golden Dolphin Sponsor ***\$1,000 annual***
- Platinum Sturgeon Sponsor ***\$2,500 annual***

Additional Donations \_\_\_\_\_

CBA T-Shirt (***\$15*** by mail) \_\_\_\_\_

Total Enclosed \_\_\_\_\_

*I am so excited about Volunteer Opportunities! I am willing to assist with . . .*

- Marsh Grass Restoration
- Water Quality Monitoring
- Speaker's Bureau
- CBA Information Booth
- Children's Educational Activities
- General Education
- Newsletters/Brochures
- Grant Writing
- Fundraising
- CBA Office
- Whatever



**Choctawhatchee Basin Alliance**  
**Okaloosa Walton Community College**  
**100 East College Boulevard**  
**Niceville, Florida 32578**

*An Equal Access / Equal Opportunity Institution.*

**Return Service Requested**

Non-Profit Org.  
U.S. Postage  
**PAID**  
Bulk Rate  
Permit #28  
Niceville, FL



*Choctawhatchee High Students Working to Re-vegetate Shoreline at Okaloosa Island*

Thank you for your donations:

Ross Hamilton- GPS unit for *RV Scout*

John Hutson - various supplies for *RV Scout*, sampling gear

Mike and Charlotte Flynt - Filing Cabinet

Brett Hinely, Bluewater Bay Marina - dry storage for *RV Scout*

Mike Nunley - Depth Finder for *RV Scout*

In-kind donations needed:

Digital camera, Bookcases, Radio for *RV Scout*, Signage for  
*RV Scout* (name and CBA)